

MONTHLY MEMBERSHIP PROGRESS REPORT

LOCATION INDIA

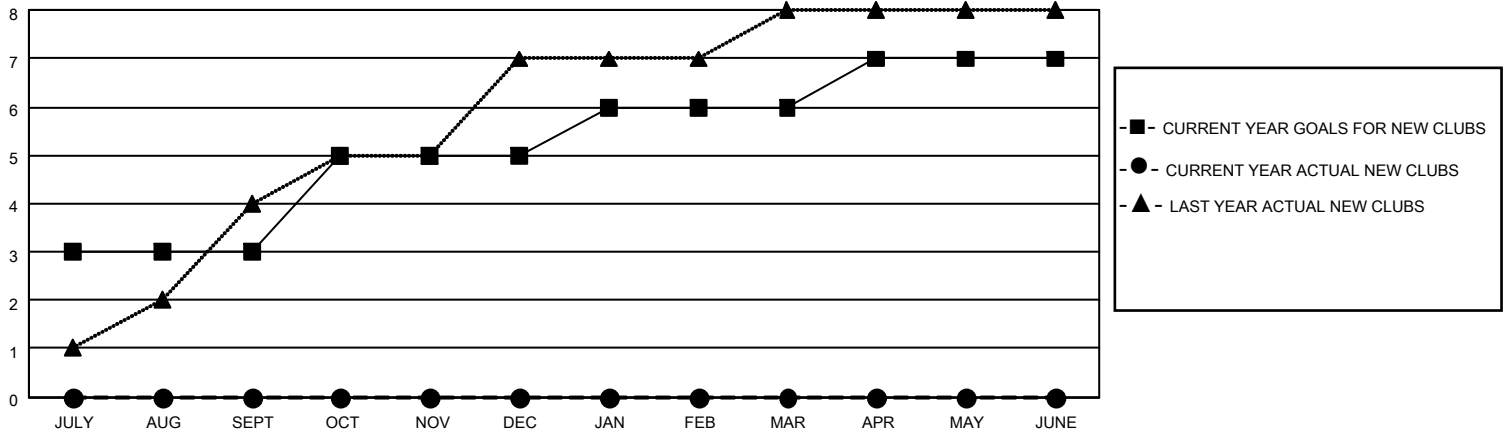
District 320 E

Results as of: 8/31/2021

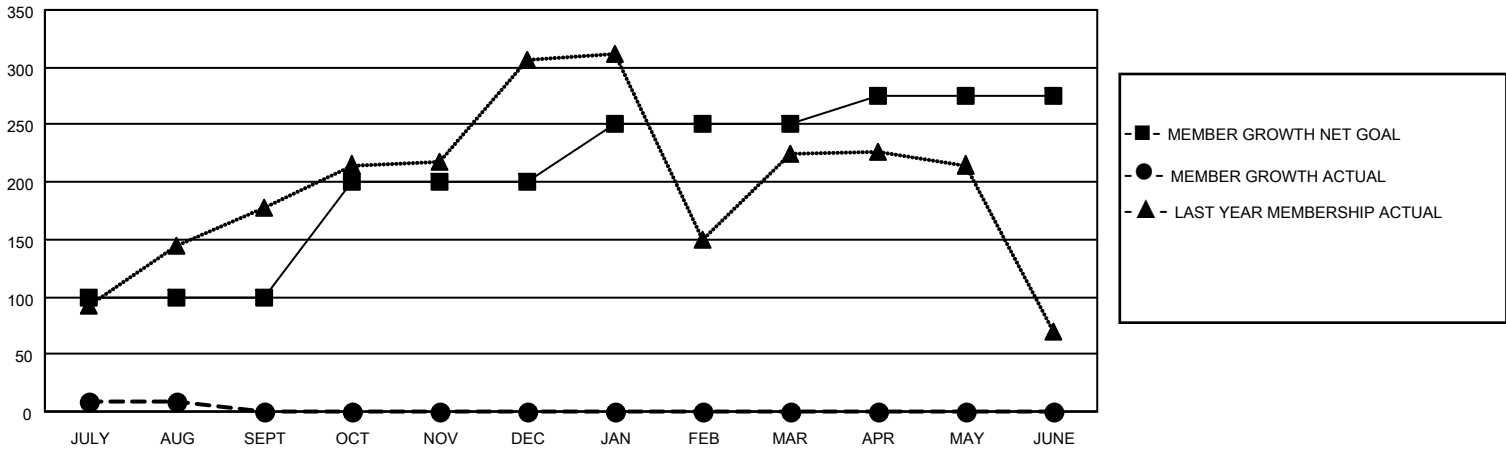
Clubs			
RESULTS FOR 2021-2022			
QUARTER	NEW CLUB GOAL	NEW CLUBS	DROPPED CLUBS
JULY/AUG/SEPT	3	0	0
OCT/NOV/DEC	2	0	0
JAN/FEB/MAR	1	0	0
APR/MAY/JUNE	1	0	0

Members			
RESULTS FOR 2021-2022			
QUARTER	MEMBER GROWTH NET GOAL	MEMBER GROWTH ACTUAL	DROPPED MEMBERS ACTUAL (including transfers)
JULY/AUG/SEPT	100	91	75
OCT/NOV/DEC	100	0	0
JAN/FEB/MAR	50	0	0
APR/MAY/JUNE	25	0	0

GOALS AND ACTUAL NEW CLUBS CUMULATIVE



GOALS AND ACTUAL MEMBERS CUMULATIVE



DROPPED CLUBS: 0

13 CLUBS OF 67 ADDED 1 OR MORE NEW MEMBERS

GENDER DISTRIBUTION

MALE	2,066 (69.56%)
FEMALE	904 (30.44%)
NON BINARY	0 (0.00%)
PREFER NOT TO ANSWER	0 (0.00%)

DROPPED MEMBERS

[CLICK HERE FOR CUMULATIVE MEMBERSHIP DATA](#)

DECEASED	3
CLUB CANCELLED	0
OTHER	72
TOTAL	75

TOTAL FAMILY UNIT MEMBERS 2,107

FAMILY MEMBERS PAYING HALF DUES 1,284